

Linear

# GROOVE Light IP67 Fixture Guide

# KKDÖ

Indoor/Outdoor | Recessed | Output up to 51lm/m (16lm/ft)

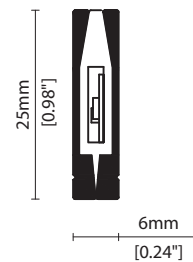


## Key applications

- ✓ Architectural detail
- ✓ Cabinet/Furniture
- ✓ Exterior
- ✓ Floor
- ✓ Orientation lighting

## Key features

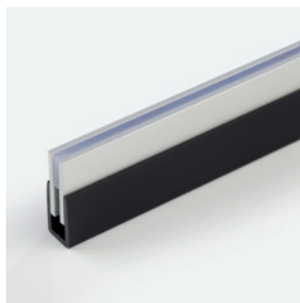
- ✓ Custom lengths
- ✓ Decorative
- ✓ Diffusion: Homogenous
- ✓ Direct view
- ✓ IP67
- ✓ Thin light line



## MOUNTING METHODS



KKCP-16 Clip



KKCH-01 PVC channel

Linear

# GROOVE Light IP67

## Specification sheet



<b>Dimensions</b>	H25/W6/L100-1000mm (H0.98/W0.24/L3.94-39.37in)
<b>PCB Cut-point</b>	100mm increment/1000mm max (3.94in increment/39.37in max)
<b>LED Pitch</b>	10mm - 100LED/m (0.39in - 30.5LED/ft)
<b>Chip</b>	<b>s-line</b> <b>k-line</b>
<b>Cover/Optics</b>	115° (Diffused cover)
<b>CCT</b>	<b>s-line:</b> 2300K/2500K/2700K/3000K/3500/4000K <b>k-line:</b> 2300K/2500K/2700K/3000K/3500/4000K
<b>LED binning</b>	<b>s-line:</b> 2-step MacAdam ellipse <b>k-line:</b> 3-step MacAdam ellipse
<b>CRI</b>	≥90
<b>Lifetime</b>	50,000 hours @ 25°C (50,000 hours @ 77°F)
<b>Operating temp</b>	T <sub>a</sub> = -25 to 50°C (T <sub>c</sub> max = 72°C) T <sub>a</sub> = -13 to 122°F (T <sub>c</sub> max = 162°F)
<b>IP Rating</b>	IP67
<b>Finish</b>	Silver anodised
<b>Mounting</b>	Recessed mounting via clips or channel (no flange)
<b>Power feed</b>	Sheathed Hardwire tails
<b>Control</b>	0-10V/1-10V/DMX/DALI



### LED Grading Key

#### Exclusive Grade

<b>s</b> s-line*	*KKDC tuned CCT range
2-step CCT range	

#### Base Grade

<b>k</b> k-line	3-step commercial range Energy Star CCTs
-----------------	---

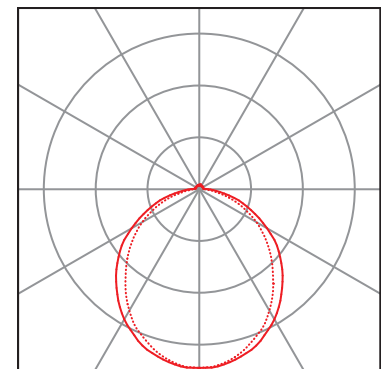
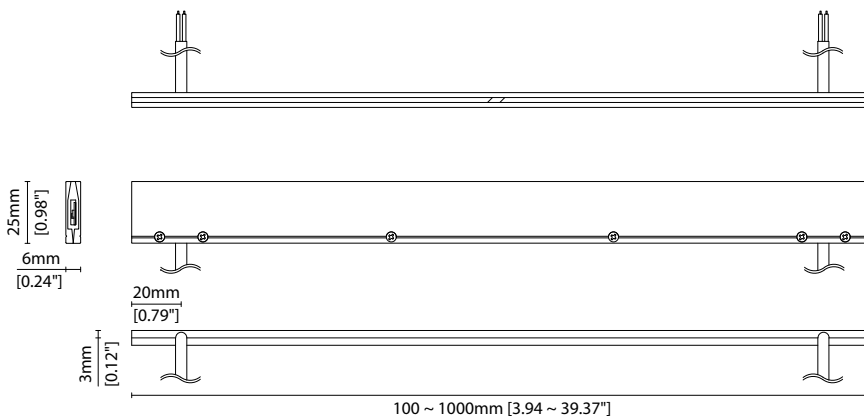
<b>Power consumption</b>	<b>Supply voltage</b>	<b>Supply current</b>
12W/m (3.66W/ft)	24V DC	0.5A/m (0.16A/ft)

### Performance Data (3000K)

	R1	R2	R3	R4	R5	R6	R7	R8	R9	R10	R11	R12	R13	R14
<b>k-line</b>	94	97	98	93	93	96	92	83	60	93	94	82	95	99

### Diffused Cover

												<b>CRI</b>	<b>R9</b>	<b>Rf</b>	<b>Rg</b>
<b>s-line</b>	51lm/m (16lm/ft)	4lm/W										93	62	-	-
<b>k-line</b>	48lm/m (14lm/ft)	4lm/W										92	60	89	97



— C0 / C180 cd / 1000 lm    - - - C90 / C270

Data derived from independent UKAS/IESNA LM-79-08 accredited testing of production samples.

See KKDC website for product document updates.

[www.kkdc.lighting](http://www.kkdc.lighting)

GROOVELightIP67S-03.03EN-20250806

# GROOVE Light IP67

## Code Table



### FIXTURE

Model	Finish	Cover	Grade <sup>1</sup>	LED	Colour (CCT)	Length Availability <sup>2</sup>	IP	Cable Length	Power Feed <sup>3</sup>	Input	
GROOVE Light IP67	GF	Silver Anodised SA	Diffused C	s	104	2300K 23	m 100-1000mm 100mm increments	IP67 67	300mm 0300 (11.81in)	Single ø4.3mm sheath tail S00A	DC 24V g
						2500K 25					
						2700K 27	i 3.94-39.37in 3.94in increments				
						3000K 30					
						3500K 35					
	4000K 40	(Specify length code OR total run length)									

<sup>1</sup> Refer to **LED Grading Key** on **Specification sheet** page

<sup>2</sup> Refer to **Length Availability List** or enter total run length instead of length code

<sup>3</sup> Refer to **Power Feed Options** on **Options** pages

### Code Example:

GF	-	SA	-	C	-	k	-	104	-	30	-	m	-	500	-	67	-	0300	-	S00A	-	g
GROOVE Light IP67		Silver Anodised		Diffused		k		104		3000K		500mm		IP67		300mm/11.81"		Single ø4.3mm sheath tail		S00A		24V DC

### ACCESSORIES

#### Mounting Accessories

KKCP-16	Clip
KKCH-01	PVC Channel

\* Refer to **Mounting accessories** on **Accessories** pages

#### PSU/Driver

0-10V/1-10W/DALI/DMX

\* Refer to **Driver/PSU Options** page for details or provide requirement and KKDC to offer the suitable option

### LED ENGINE VARIANTS (LED STRIP TYPE)

Luminaire	LED	Lumen/m	Lumen/ft	W/m	W/ft	Spec Doc	Length	Increment
GROOVE Light	104	24	7	12	3.65	GROOVE Light	100-1000mm (3.94-39.37in)	100mm (3.94in)
<b>GROOVE Light IP67</b>	<b>104</b>	<b>51</b>	<b>16</b>	<b>12</b>	<b>3.66</b>	<b>GROOVE Light IP67</b>	<b>100-1000mm (3.94-39.37in)</b>	<b>100mm (3.94in)</b>
GROOVE Light RGB	101	Red: 2 Green: 10 Blue: 3 RGB: 15	Red: 0.6 Green: 3 Blue: 1 RGB: 5	21.6	6.58	GROOVE Light RGB	100-1000mm (3.94-39.37in)	100mm (3.94in)

\* Performance data: s-line, diffused cover, 3000K

Linear

# GROOVE Light IP67

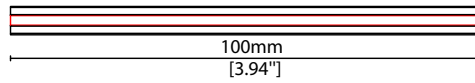
## Length Availability List



Length Code		Fixture Length <sup>1</sup>		LED Strip <sup>2</sup>		End Cap Dimension		Wattage (W)	Output (lm)
Metric	Imperial(US)	Metric	Imperial(US)	Metric	Imperial(US)	Metric	Imperial(US)		3000K (Test Data)
m0100	i0004	100mm	3.94in	100mm	3.94in	N/A	N/A	1.20	5
m0200	i0008	200mm	7.87in	200mm	7.87in	N/A	N/A	2.40	9
m0300	i0012	300mm	11.81in	300mm	11.81in	N/A	N/A	3.60	14
m0400	i0016	400mm	15.75in	400mm	15.75in	N/A	N/A	4.80	18
m0500	i0020	500mm	19.69in	500mm	19.69in	N/A	N/A	6.00	23
m0600	i0024	600mm	23.62in	600mm	23.62in	N/A	N/A	7.20	27
m0700	i0028	700mm	27.56in	700mm	27.56in	N/A	N/A	8.40	32
m0800	i0031	800mm	31.50in	800mm	31.50in	N/A	N/A	9.60	36
m0900	i0035	900mm	35.43in	900mm	35.43in	N/A	N/A	10.80	41
m1000	i0039	1000mm	39.37in	1000mm	39.37in	N/A	N/A	12.00	45

<sup>1</sup> Actual total overall length of light fixture (LED strip + end caps + void/wire hole)

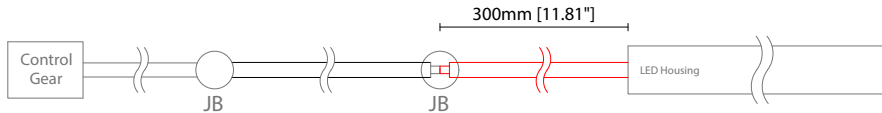
<sup>2</sup> Actual length of PCB strip



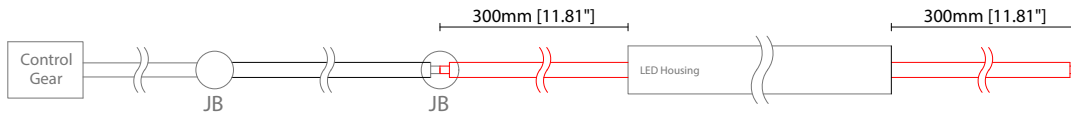
### POWER FEED OPTIONS

\* Options are an integral part of the fixture ordering codes. Please refer to **Code Table** pages.

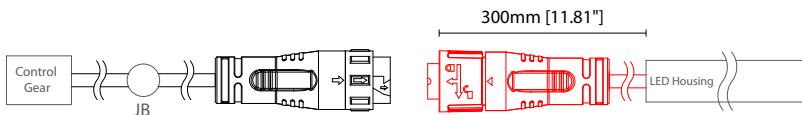
**0300 S00A 300mm (11.81") Single Ø4.3mm sheath tail**



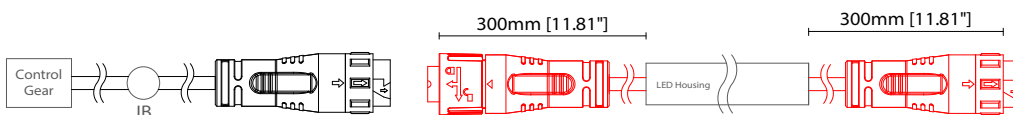
**0300 D00A 300mm (11.81") Double Ø4.3mm sheath tail**



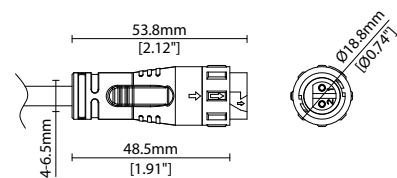
**0300 S67A 300mm (11.81") Single ø4.3mm sheath connector IP67 (Premoulded)**



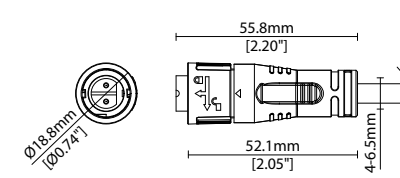
**0300 D67A 300mm (11.81") Double ø4.3mm sheath connector IP67 (Premoulded)**



**2 Pin Female Connector IP67 (Premoulded)**



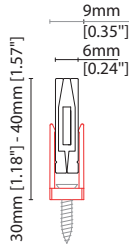
**2 Pin Male Connector IP67 (Premoulded)**



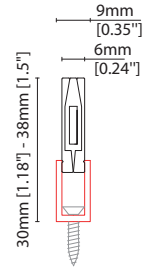
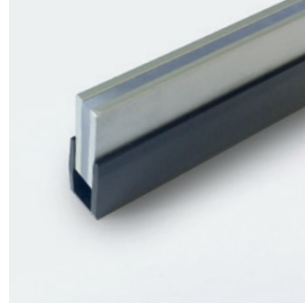
**Key**

- Control Gear Power supply, sub-controllers & control systems
- JB Junction box / cable connection

## MOUNTING ACCESSORIES

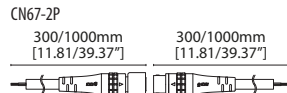


**KKCP-16** (1no.)  
Clip (allow 2 per metre/40in)  
Anodised aluminium finish  
W9/H30-40mm (W0.35/H1.18-1.57")



**KKCH-01** \*  
PVC channel (minimum 200mm (7.87in) PVC channel per 500mm (19.69in) of GROOVE Light)  
Black PVC finish  
W9/H30-38mm (W0.35/H1.18-1.5")  
\* Specify length of channel in 1000mm (39.37in) increments (to be cut on site further as required)

## POWER FEED



**CN67-2P-0300** 300mm (11.81in) pair  
**CN67-2P-1000** 1000mm (39.37in) pair  
IP67  
2 PIN male + female connector set



**CN67-2P-3000** 3000mm (118.11in) pair  
IP67  
2 PIN male + female connector set

## EXTERIOR JUNCTION BOXES



**KKJB-07**  
IP67 Slim J-Box  
(including type A,B,C,D bushings)



**KKJB-07R**  
Potting resin for IP67 Slim J-Box

### KKDC CONTROL



IP20  
Plastic housing  
L170/W59/H29mm  
(L6.69/W2.32/H1.14in)

**KKDM-06** 1-10V  
visDIM dimmable sub-controller  
(4 x 8A max @ 12-36V)



IP20  
Plastic housing  
L170/W53.4/H28mm  
(L6.69/W2.10/H1.10in)

**KKSC-05** DMX  
visDIM dimmable sub-controller  
(4 x 5A max @ 12-36V)



IP20  
Plastic housing  
L170/W59/H29mm  
(L6.69/W2.32/H1.14in)

**KKDL-02** DALI  
visDIM dimmable sub-controller  
(4 x 8A max @ 12-36V)



IP20  
Plastic housing  
L166/W53.4/H23mm  
(L6.54/W2.10/H0.91in)

**KKDL-03** DALI  
visDIM dimmable sub-controller  
(4 x 5A max @ 12-36V)



IP20  
Plastic housing  
L170/W53.4/H28mm  
(L6.69/W2.10/H1.10in)

**KKDL-04** DALI-2  
visDIM dimmable sub-controller  
(4 x 5A max @ 12-36V)

### AVAILABLE PSU OPTIONS

Control Mode	PSU (Order Code)	Input Voltage AC	Output Voltage DC	Rated Output Current	Rated Power	Dim %	IP Rating
Switched	CEN-60-24	90-295V	24V	2.5A	60W	-	IP67
	HLG-60H-24	90-305V	24V	2.5A	60W	-	IP67
	HLG-100H-24	90-305V	24V	4.0A	100W	-	IP67
	HLG-150H-24	90-305V	24V	6.3A	150W	-	IP67
	HLG-240H-24	90-305V	24V	10A	240W	-	IP67
0-10V (1-10V)	PWM-40-24	90-305V	24V	1.67A	40W	100-0.15 (100-10)	IP67
	PWM-60-24	90-305V	24V	2.5A	60W	100-0.15 (100-10)	IP67
	PWM-90-24	90-305V	24V	3.67A	90W	100-0.15 (100-10)	IP67
	PWM-120-24	90-305V	24V	5.0A	120W	100-0.15 (100-10)	IP67
DALI	LIN100A1	120-277V	24V	1A per channel	100W	100-0.1	IP66/IP40
DMX RGB	LIN100A1	120-277V	24V	1.33A per channel	100W	100-0.1	IP66/IP40
DMX RGBW	LIN100A1	120-277A	24V	1A per channel	100W	100-0.1	IP66/IP40

### Flicker Free Options - Combination of PSU+ sub-controller

Control Mode	PSU (Order Code)	Sub-controller (Order Code)	Input Voltage AC	Output Voltage DC	Rated Output Current	Rated Power	Dim %	IP Rating PSU/ Sub-controller
0-10V or 1-10V	CEN-60-24	KKDM-06	90-295V	24V	2.5A	60W	100-0.9	IP67/IP20
	HLG-60H-24	KKDM-06	90-295V	24V	2.5A	60W	100-0.9	IP67/IP20
	HLG-100H-24	KKDM-06	90-295V	24V	4.0A	100W	100-0.9	IP67/IP20
	HLG-150H-24	KKDM-06	90-295V	24V	6.3A	150W	100-0.9	IP67/IP20
	HLG-240H-24	KKDM-06	90-295V	24V	10.0A	240W	100-0.9	IP67/IP20
DALI	CEN-60-24	KKDL-02/03/04/visDIM PRO 30	90-295V	24V	2.5A	60W	100-0.1	IP67/IP20
	HLG-60H-24	KKDL-02/03/04/visDIM PRO 30	90-305V	24V	2.5A	60W	100-0.1	IP67/IP20
	HLG-100H-24	KKDL-02/03/04/visDIM PRO 30	90-305V	24V	4.0A	100W	100-0.1	IP67/IP20
	HLG-150H-24	KKDL-02/03/04/visDIM PRO 30	90-305V	24V	6.3A	150W	100-0.1	IP67/IP20
	HLG-240H-24	KKDL-02/03/04/visDIM PRO 30	90-305V	24V	10.0A	240W	100-0.1	IP67/IP20
DMX RGB	CEN-60-24	KKSC-05	90-295V	24V	2.5A	60W	100-0.9	IP67/IP20
	HLG-60H-24	KKSC-05	90-305V	24V	2.5A	60W	100-0.9	IP67/IP20
	HLG-100H-24	KKSC-05	90-305V	24V	4A	100W	100-0.9	IP67/IP20
	HLG-150H-24	KKSC-05	90-305V	24V	6.3A	150W	100-0.9	IP67/IP20
	HLG-240H-24	KKSC-05	90-305V	24V	10.0A	240W	100-0.9	IP67/IP20

<sup>1</sup> The items shown above cover the most frequently used specification but does not exhaust the possible options

<sup>2</sup> PSU and/or driver can be chosen from the table, or KKDC may recommend the best option upon receipt of the controls requirement and installation environment

<sup>3</sup> Electrical shop drawing will include detailed information of PSU and relevant control drivers

<sup>4</sup> Cut sheets are available on the controls section of [www.kkdc.lighting](http://www.kkdc.lighting) or upon request